

COVID SAFE STATEMENT



COVID SAFE

FLAZEDA HUB

Dear Patrons and Guests,

The health and wellbeing of all our patrons, guests and staff at the Flazéda is our top priority and one that is monitored constantly according to Australian Government regulation and guidelines.

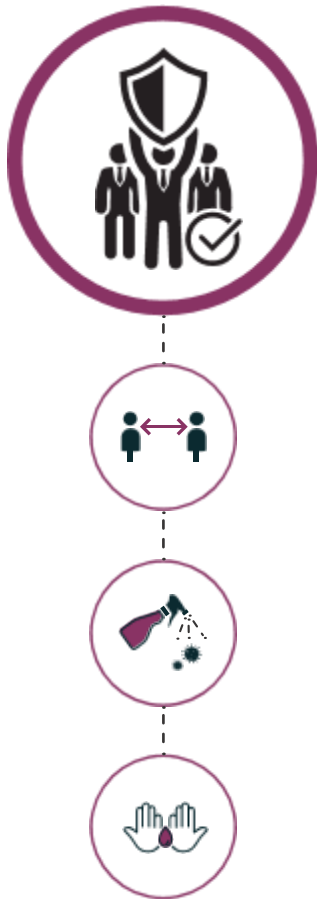
Flazéda, as part of Jazida Productions, has taken a number of steps to increase awareness around COVID-19. Our teams and staff are well prepared on all policies, procedures and preventative measures to minimise risk as well as take action in the event of an occurrence at the venue.

We will continue to evolve our plans as regulations and guidance on how best to ensure a safe environment is developed. This document outlines our key measures to provide a safe environment under the current regulations and guidance.

Please note: As of March 6, 2021 use of the Canberra Check In App is mandatory for all guests entering Flazéda.

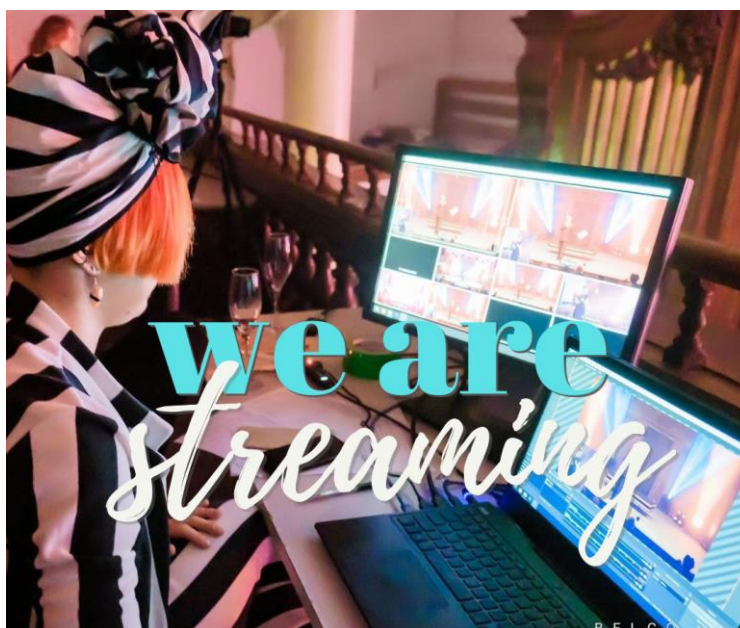
If a guest refuses to check in via this app, fines may apply as per ACT Health direction. In addition, if any guests show clear symptoms of illness on arrival to the venue, the venue has the right to refuse entry.

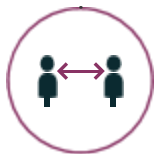




OUR GUESTS

- Multiple and visible hand sanitisation places throughout the venue for guest use.
- Hand washing facilities and multiple stalls in the bathrooms to enable social distancing
- Disinfectant wipes and antibacterial spray available and paired with regular cleaning by the staff internally and body corporate (in toilets)
- Providing livestream options for shows, so people can view without overcrowding
This hybrid deliver supports better covid safety
- Visible signage, public address announcements and guidelines covering the basic principles for individuals staying COVID Safe. These include guidance on effective hand washing and coughing etiquette to ensure personal hygiene whilst at the venue, staying away if feeling unwell and maintaining social distancing where ever possible.
- Regular and increased frequency of cleaning and sanitisation in all high traffic areas throughout the venue, including key touch point areas such as door handles, shared props, benchtops and furniture surfaces. Cleaning of railings, foyers, and toilets regularly done by body corporate.
- Carefully considered food and drink options and resources to support COVID safe principles (such as single-use cups, cashless bar, single serve portions, etc)
- Maintain all social distancing requirements as per Government guidelines including use of personal protective equipment where appropriate.





OUR STAFF

All Flazeda staff have undertaken, and continue to undertake, training according to Government policies and procedures in the areas of social distancing, hand sanitisation, personal protective equipment, deep cleaning procedures, first aid and actions required to prevent the spread of COVID-19.

Training will be continually updated and implemented on an ongoing basis as directed by Australian Government, ACT Government.

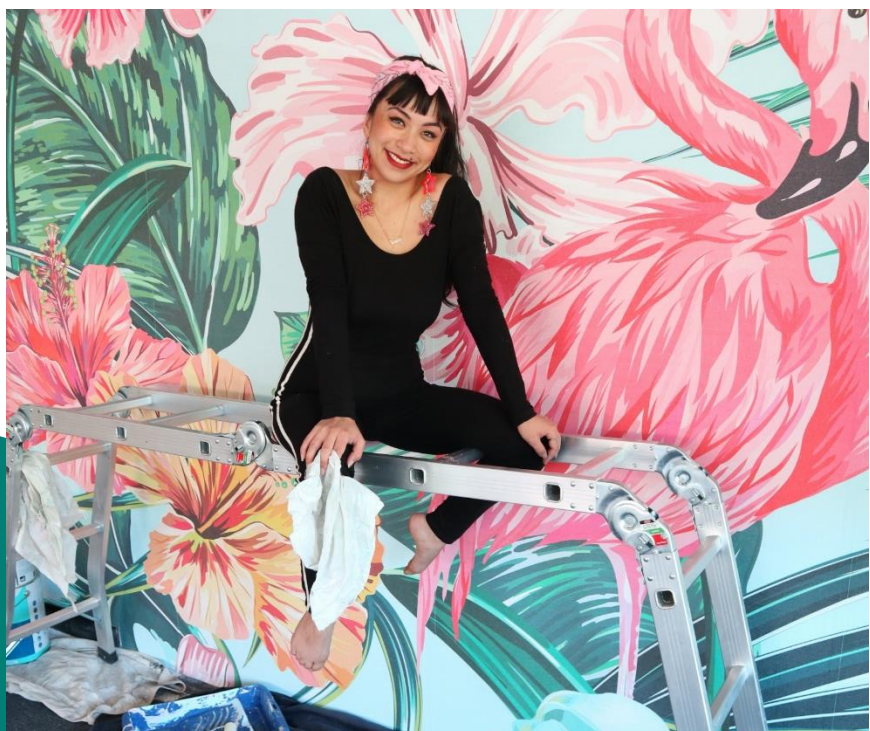
Staff are required to stay away if feeling unwell or displaying symptoms of COVID-19 and to get tested, if appropriate.

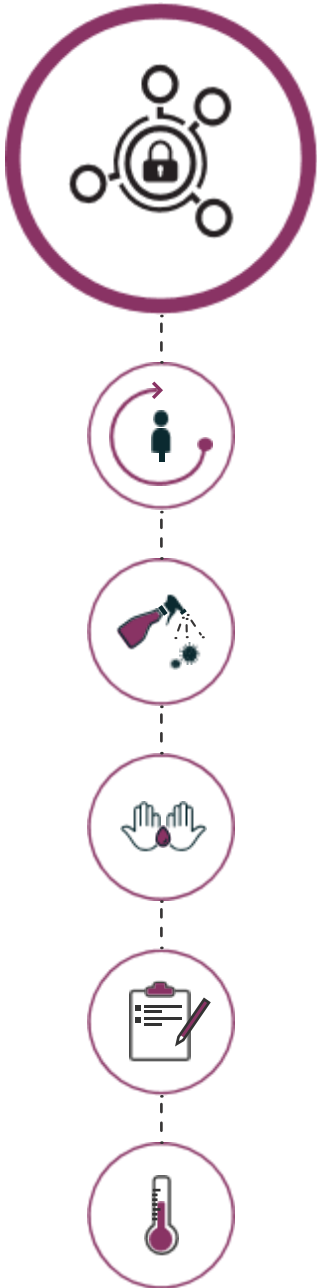
Staff know they cannot come into work if they are unwell and also know to remind customers to check in using the CBR Check In App.

Structures are in place to easily allow classes and event to be cancelled or backfilled, or livestreamed, should staff, students, or audience be unwell.

Staff know how to and when to sanitise surfaces and shared props (such as hula hoops, fans, tables, etc) and only staff have access to the bar area.

A staff intranet, facebook group, and regular meetings ensure continuous improvement including focusing on improving COVID safe practices.





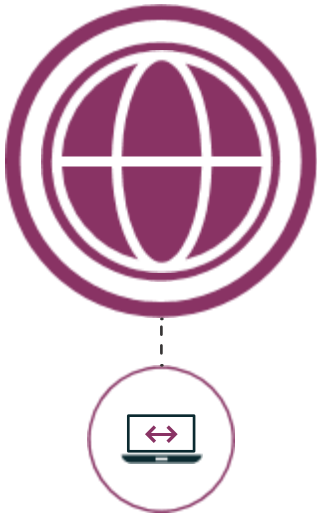
OPTIONAL MEASURES FOR CONSIDERATION

At Flazeda, we appreciate that no two events are the same and, in some cases, additional and supportive precautionary measures may be selected.

Events have separate event Covid risk management plans

- Temperature checking on entry to the venue
- Additional sanitisation processes for delegates
- Additional crowd control measures via ushers or security personnel
- Use of floor decals and additional directional signage and/or crowd control
- Full vetting of attendees prior to event entry with exclusive use of the venue

Our event COVID management plans also consider potential audience interaction by performers and have mitigation strategies in place.



OFFICIAL COVID-19 RESOURCES

For all additional COVID-19 related information provided through official Government resources:

It is strongly recommended that the following websites be reviewed on a regular basis for the most up to date information regarding COVID-19 measures and steps to be taken based on Australian Government direction:

- *Australian Government Department of Health – latest facts, figures, guidelines on all social distancing measures, health and wellbeing, mental health and COVID-19 restrictions*

www.health.gov.au

- *Information about the health and safety of your workplace and industry*

www.safeworkaustralia.gov.au/covid-19-information-workplaces

- *ACT Government – for all updates on the Territory's responses, measures and guidelines for the Australian Capital Territory*

www.covid19.act.gov.au

- *For additional information regarding the IHG (InterContinental Hotels Group) Clean Promise designed to provide confidence and protection*

www.ihg.com/content/us/en/customer-care/clean-promise



We trust that this information has been helpful as part of the planning process in the lead up to your visit or meeting at Flazéda. We also welcome the opportunity to receive your feedback on any additional services which may benefit the broader business events community as part of COVID-19.

For additional information or any queries, please contact
flazedahub@gmail.com

On behalf of Flazéda, we assure you of our ongoing commitment to you and your guests' health and wellbeing whilst at the venue.

Stay well, stay safe.

Yours sincerely,



Rachel Reid

Owner
Flazéda



FLOOR PLANS

Flazéda has x2 rooms with storage, a bio box and a bar.

These spaces offer flexibility in terms of creative use of space, options to appeal different uses and set ups. The floorplans provided reflect the most common set up during events

The useable space for events (hashed in pink) is approximately 67.96 meters square [7.6m wide by 9.7m deep (73.72 meters square) minus the stage area (5.76 meters square)]

The green room (backstage for shows) is approximately 34 meters square [7.6m wide by 4.5m deep]

